



# Preferred Packaging

A division of  *Flexible Packaging*



## PRODUCT GUIDE

TOTAL PACKAGING SOLUTIONS

## Table of Contents

Roll Stock Films.....	3
Meal and School Lunch Trays.....	4
Fruit/Vegetable Cup and Salad/Bun Trays .....	5
Utility and Reimbursable Meal Pack Trays .....	6
Ovenable CPET Trays.....	7
Sandwich Wedge, Hot Dog and Hoagie.....	8
Medium and Large Entrée Platters.....	9
Heat Seal and Support Equipment.....	10-15

## Preferred Packaging

770-416-0088  
770-416-0095 fax  
sales@prefpkg.com

prefpkg.com  
osmachines.com

Preferred Packaging is small enough to offer quick, personalized service but large enough to handle all of your needs.

We are dedicated to providing quality products. Our team understands your operation and works with you to create effective and efficient packaging solutions.



A division of  Flexible Packaging.



## Roll Stock Films

Our inventory of various film types and a full range of converting equipment allows us to maintain our quality service and quick turnaround commitment to our customers.

### Affirm™ Lidding Films

Films that seal to all material, including PP, CPET, APET, PS and coated paperboard. Seal strength can vary from easy peel to weld seal.

### Dual-Ovenable Films

These films are perfect for the packaging of any application that needs to be heated in an oven or microwave.

### Anti-Fog Films

Films treated to stay clear under heat, high moisture, or refrigerated conditions.

### Vertical and Horizontal Form Fill and Seal Films

Our roll stock for VFFS and HFFS applications is fully customizable.

### Polypropylene (BOPP) and Polyester Overwrap Films

Our PP and PE high speed overwrap films are available in a full range of thicknesses.

### Custom In-House Printing and Lamination

We specialize in custom printed films up to “8” colors to cover just about every tray application imaginable including ovenable overwrap. We can surface print or reverse printed film “buried” within a protective laminate layer.

### Barrier Films

Our specialized films have the ability to provide different barrier levels to achieve the OTR and WVTR to meet your needs.

### Perforated Films

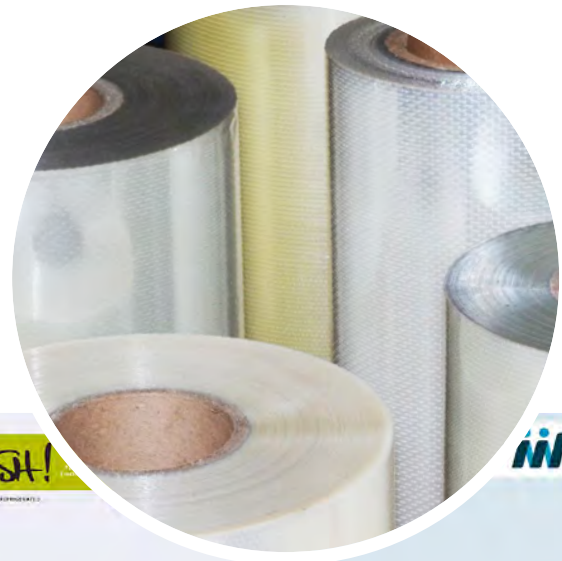
Laser perforations to adjust OTR to extend the shelf-life of your freshcut produce, by properly controlling the release of Co2 and the entry of O2 into the package. Hot pin for moisture evacuation to maintain crispness.

### Specialty Films

Available in clear, white or metalized. We also offer *Retortable* and *HPP* applications. These films can be sealed to CPET, APET, PP, PS, PVC or paperboard substrates.



**Affirm™**  
LIDDING FILMS



A division of  Flexible Packaging

# Meal and School Lunch Trays

## FINA™ Food Trays



**I-312 Insert (NT275 & NT312 only)**  
**Four Compartment Condiment Salad/ School Lunch Tray**  
 Size: 6-1/2" L x 5" W x 1-1/16" D  
 Colors: Clear

Wt.	Cube	Count
13 lbs.	2.17	1200 ea.

**275-1 Insert (NT275 & NT312 only)**  
**Three Compartment Condiment Salad/ School Lunch Tray**  
 Size: 6-1/2" L x 5" W x 1" D  
 Colors: Clear

Wt.	Cube	Count
17 lbs.	1.92	1000 ea.



**NT-4C (Film Sealable) Snack/ Lunchable Tray**  
 Size: 6-1/2" L x 5" W x 1-7/16" D  
 Colors: Clear

Wt.	Cube	Count
17 lbs.	2.30	500 ea.

**NT312 with the I-312 Condiment Insert**



**NT100**  
**One Compartment Salad/ School Lunch Tray**  
 Size: 6-1/2" L x 5" W x 1-5/8" D  
 Colors: Clear

Wt.	Cube	Count
17 lbs.	2.30	500 ea.



**NT150**  
**One Compartment Salad/ School Lunch Tray**  
 Size: 6-1/2" L x 5" W x 2-1/8" D  
 Colors: Clear

Wt.	Cube	Count
17 lbs.	2.30	500 ea.



**NT200**  
**Two Compartment Salad/ School Lunch Tray**  
 Size: 6-1/2" L x 5" W x 1-7/8" D  
 Colors: Clear

Wt.	Cube	Count
17 lbs.	2.30	500 ea.



**NT275**  
**One Compartment Salad/ School Lunch Tray**  
 Size: 6-1/2" L x 5" W x 2-3/4" D  
 Colors: Clear

Wt.	Cube	Count
14 lbs.	2.30	500 ea.



**NT312**  
**One Compartment Salad/ School Lunch Tray**  
 Size: 6-1/2" L x 5" W x 3-1/8" D  
 Colors: Clear

Wt.	Cube	Count
34 lbs.	4.63	1200 ea.



**NT100-MW (High Heat)**  
**One Compartment Salad/ School Lunch Tray**  
 Size: 6-1/2" L x 5" W x 1-1/2" D  
 Colors: Black "Microwavable"

Wt.	Cube	Count
12 lbs.	2.17	500 ea.



**NT140-MW (High Heat)**  
**One Compartment Salad/ School Lunch Tray**  
 Size: 6-1/2" L x 5" W x 1-7/8" D  
 Colors: Black "Microwavable"

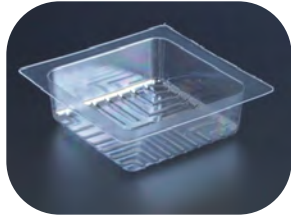
Wt.	Cube	Count
12 lbs.	2.17	500 ea.



**NT130-2HB MW (High Heat)**  
**Two Compartment Salad/ School Lunch Tray**  
 Size: 6-1/2" L x 5" W x 1-5/8" D  
 Colors: Black "Microwavable"

Wt.	Cube	Count
13 lbs.	2.17	500 ea.

## Fruit Cup and Vegetable Portion Trays



**D72**  
**4 oz. Dessert/ Portion Tray**  
 Size: 3-1/2" L x 3-1/2" W x 1" D  
 Colors: Clear

Wt.	Cube	Count
15 lbs.	2.06	2000 ea.



**D74**  
**6.5 oz. Dessert/ Portion Tray**  
 Size: 3-1/2" L x 3-1/2" W x 1-3/4" D  
 Colors: Clear

Wt.	Cube	Count
20 lbs.	3.75	2000 ea.



**D78**  
**8 oz. Dessert/ Portion Tray**  
 Size: 3-1/2" L x 3-1/2" W x 2-3/4" D  
 Colors: Clear

Wt.	Cube	Count
13 lbs.	2.74	1440 ea.



**D72R-MW (High Heat) 4 oz. Dessert/ Portion Tray**  
 Size: 3-1/2" L x 3-1/2" W x 1-1/4" D Colors: Black "Microwavable"

Wt.	Cube	Count
9 lbs.	1.58	1000 ea.



**D74-MWBLK (High Heat) 6.5 oz. Dessert/ Portion Tray**  
 Size: 3-1/2" L x 3-1/2" W x 1-3/4" D Colors: Black "Microwavable"

Wt.	Cube	Count
12 lbs.	2.74	1000 ea.

## Side Salads, Bun and Dessert Trays



**SB1**  
**10 oz. Salad/ Dessert Tray**  
 Size: 4-5/8" L x 4-5/8" W x 1-3/8" D  
 Colors: Clear

Wt.	Cube	Count
16 lbs.	2.75	1000 ea.



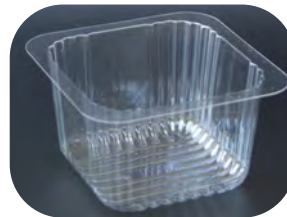
**SB2R-HD**  
**14 oz. Salad/ Bun/ Dessert Tray**  
 Size: 4-5/8" L x 4-5/8" W x 2" D  
 Colors: Clear

Wt.	Cube	Count
16 lbs.	2.20	1000 ea.



**SB3R-HD**  
**18 oz. Salad/ Bun/ Dessert Tray**  
 Size: 4-5/8" L x 4-5/8" W x 2-3/4" D  
 Colors: Clear

Wt.	Cube	Count
17 lbs.	2.20	1000 ea.



**SB5R-HD**  
**16 oz. Salad/ Bun/ Dessert Tray**  
 Size: 4-5/8" L x 4-5/8" W x 2-1/2" D  
 Colors: Clear

Wt.	Cube	Count
17 lbs.	2.20	1000 ea.



**SB32\***  
**32 oz. Chef Salad/ Hamburger Tray**  
 Size: 5-1/2" L x 5-1/2" W x 2-1/2" D  
 Colors: Clear

Special Order-MOQ 100 Cases

Wt.	Cube	Count
13 lbs.	3.99	500 ea.

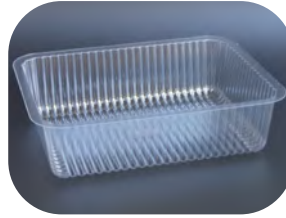


**SB2RHD-MW (High Heat) 14 oz. Salad/ Bun/ Dessert Tray**  
 Size: 4-5/8" L x 4-5/8" W x 2" D  
 Colors: Black "Microwavable"

Wt.	Cube	Count
16 lbs.	2.20	1000 ea.

# Reimbursable Meal Packs/Utility Trays

## FINA™ Food Trays



**SL64**  
**One Compartment Utility/  
 School Cold Pack Tray**  
 Size: 9-1/4" L x 7-1/16" W x 2-3/8" D  
 Colors: Clear, Black

Wt.	Cube	Count
26 lbs.	4.63	500 ea.



**SL71\***  
**Utility/School Cold Pack Tray, One  
 Compartment Deep (Clear)**  
 Size: 9-1/4" L x 7-1/16" W x 3-1/2" D  
 Colors: Clear

Special Order-MOQ 50 Cases

Wt.	Cube	Count
26 lbs.	4.63	500 ea.



**SL78**  
**One Compartment Utility/  
 School Cold Pack Tray**  
 Size: 9-1/4" L x 7-1/16" W x 3-1/2" D  
 Colors: Clear

Wt.	Cube	Count
26 lbs.	4.63	500 ea.



**SL1065-26\***  
**One Compartment School  
 Lunch Tray**  
 Size: 9-3/4" L x 6-1/2" W x 2-1/2" D  
 Colors: Clear

Special Order-MOQ 50 Cases

Wt.	Cube	Count
26 lbs.	4.63	500 ea.



**SL1065-26-2C\***  
**Two Compartment School  
 Lunch Tray**  
 Size: 9-3/4" L x 6-1/2" W x 2-1/2" D  
 Colors: Clear

Special Order-MOQ 50 Cases

Wt.	Cube	Count
26 lbs.	4.63	500 ea.

# Microwavable Meal Tray



**SL8565-15-3MW (High Heat)**  
**Three Compartment Salad/School Lunch Tray**  
 Size: 8-7/16" L x 6-3/8" W x 1-1/2" D  
 Colors: Black "Microwavable"

Wt.	Cube	Count
24 lbs.	2.83	500 ea.



## Feeding Program Trays - Ovenable

# FINA™ Food Trays



Oval and round ovenable tray versions are available on request. Minimum pallet orders required



**2642**  
**28.7 oz. Capacity**  
**One Compartment CPET Tray**  
 Size: 8-1/2" L x 6-1/2" W x 1-1/2" D  
 Colors: Black, White

Wt. Count  
 22 lbs. 252 ea.



**2684**  
**15.9 oz./4.1 oz./4.1 oz. Capacity**  
**Three Compartment CPET Tray**  
 Size: 8-1/2" L x 6-1/2" W x 1-1/2" D  
 Colors: Black, White

Wt. Count  
 19 lbs. 240 ea.



**2410**  
**38.9 oz. Capacity**  
**One Compartment CPET Tray**  
 Size: 8-1/2" L x 6-1/2" W x 1-7/8" D  
 Colors: Black, White

Wt. Count  
 17 lbs. 252 ea.



**2649**  
**19.8 oz./5.1 oz./5.1 oz. Capacity**  
**Three Compartment CPET Tray**  
 Size: 8-1/2" L x 6-1/2" W x 1-7/8" D  
 Colors: Black, White

Wt. Count  
 22 lbs. 252 ea.



**2661**  
**13.5 oz./18.3 oz. Capacity**  
**Two Compartment CPET Tray**  
 Size: 8-1/2" L x 6-1/2" W x 1-1/2" D  
 Colors: Black, White

Wt. Count  
 22 lbs. 252 ea.



**2928**  
**11.8 oz./5.1 oz./5.1 oz. Capacity**  
**Three Compartment CPET Tray**  
 Size: 8-1/2" L x 6-1/2" W x 1-1/2" D  
 Colors: Black, White

Wt. Count  
 20 lbs. 240 ea.



**2570**  
**16.9 oz./23.7 oz. Capacity**  
**Two Compartment CPET Tray**  
 Size: 8-1/2" L x 6-1/2" W x 2" D  
 Colors: Black, White

Wt. Count  
 23 lbs. 252 ea.



**2929**  
**13.5 oz./6.8 oz./6.8 oz. Capacity**  
**Three Compartment CPET Tray**  
 Size: 8-1/2" L x 6-1/2" W x 1-7/8" D  
 Colors: Black, White

Wt. Count  
 29 lbs. 345 ea.

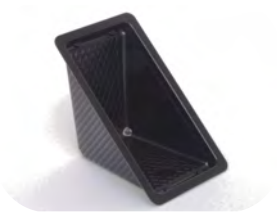
# Film Sealable Sandwich & Hot Dog Hoagie Trays

## FINA™ Food Trays



**W3**  
**Medium Sandwich Wedge**  
 Size: 6-1/2" L x 3-1/4" W x 3-1/8" D  
 Colors: Black, Opaque, clear

Wt.	Cube	Count
19 lbs.	2.72	1000 ea.



**W101**  
**Large Sandwich Wedge**  
 Size: 6-1/2" L x 3-1/2" W x 3-1/16" D  
 Colors: Black, Opaque

Wt.	Cube	Count
19 lbs.	2.72	1000 ea.



**H3**  
**Hot Dog Tray**  
 Size: 6-5/8" L x 3-1/4" W x 2" D  
 Colors: Clear

Wt.	Cube	Count
19 lbs.	4.12	1000 ea.



**H103**  
**Hot Dog/ Hoagie Tray**  
 Size: 6-5/8" L x 3-5/8" W x 2-3/16" D  
 Colors: Clear

Wt.	Cube	Count
19 lbs.	3.94	1000 ea.



**H1\***  
**Hot Dog/ Hoagie Tray**  
 Size: 6-5/8" L x 3-5/8" W x 2-1/2" D  
 Colors: Clear

Special Order-MOQ 50 Cases

Wt.	Cube	Count
18 lbs.	3.99	1000 ea.

## Large Entrée Platters



**P5R SALAD INSERT\***  
**Five Cell Condiment Insert for P5 Platter**  
 Size: 8-1/2" L x 5" W x 1-1/16" D  
 Colors: Clear

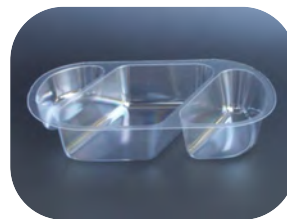
Special Order-MOQ 100 Cases

Wt.	Cube	Count
15 lbs.	2.44	500 ea.



**P1R**  
**One Compartment Entrée Platter**  
 Size: 9-1/4" L x 5-3/4" W x 1-11/16" D  
 Colors: Clear

Wt.	Cube	Count
18 lbs.	2.51	500 ea.



**P3-LS\***  
**Three Compartment Entrée Platter**  
 Size: 9-1/4" L x 5-3/4" W x 1-11/16" D  
 Colors: Clear

Special Order-MOQ 100 Cases

Wt.	Cube	Count
18 lbs.	2.50	500 ea.



**P2-LS**  
**Two Compartment Entrée Platter**  
 Size: 9-1/4" L x 5-3/4" W x 1-11/16" D  
 Colors: Clear

Wt.	Cube	Count
18 lbs.	2.51	500 ea.



**P5\***  
**One Compartment "Deep" Entrée Platter**  
 Size: 9-1/4" L x 5-3/4" W x 2-3/4" D  
 Colors: Clear

Special Order-MOQ 100 Cases

Wt.	Cube	Count
21 lbs.	4.22	500 ea.



## Large Entrée Platters



**P1R-MW (High Heat)**  
**One Compartment Entrée Platter**  
 Size: 9-1/4" L x 5-3/4" W x 1-11/16" D  
 Colors: Black - Microwavable

Wt.	Cube	Count
13 lbs.	2.35	250 ea.



**P2R-MW (High Heat)**  
**Two Compartment Entrée Platter**  
 Size: 9-1/4" L x 5-3/4" W x 1-11/16" D  
 Colors: Black - Microwavable

Wt.	Cube	Count
13 lbs.	2.00	250 ea.



**P3R-MW (High Heat)**  
**Three Compartment Entrée Platter**  
 Size: 9-1/4" L x 5-3/4" W x 1-11/16" D  
 Colors: Black - Microwavable

Wt.	Cube	Count
13 lbs.	2.35	250 ea.

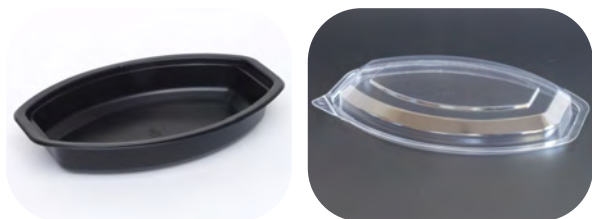


**P5R-MW\* DEEP (High Heat)**  
**One Compartment Entrée Platter**  
 Size: 9-1/4" L x 5-3/4" W x 3-1/2" D  
 Colors: Black - Microwavable

Special Order-MOQ 50 Cases

Wt.	Cube	Count
21 lbs.	2.72	250 ea.

## Container/Lid Combo Trays



**912-MW/ L900-AF\* Combo (High Heat)**  
**12 oz. Casserole Container**  
 Size: Bowl - 8-1/8" L x 5-1/2" W x 1-1/4" D  
 Lid—8-5/8" L x 5-3/4" W x 9/16" D

Special Order-MOQ 50 Cases

Wt.	Cube	Count
9 lbs.	1.37	250 ea.



**P16-MW\* (High Heat)**  
**16 oz. Medium Entrée Platter**  
 Size: 7-1/2" L x 5-3/4" W x 1-3/8" D  
 Lid - 7-3/4" L x 6" W x 7/8" D

Special Order-MOQ 100 Cases

Wt.	Cube	Count
17 lbs.	2.40	500 ea.

## Medium Entrée Platter & Lid



## FINA™ Food Trays



**P1.5R-MW (High Heat)**  
**One Compartment Entrée Platter**  
 Size: 9-1/4" L x 5-3/4" W x 2-1/2" D  
 Colors: Black - Microwavable

Wt.	Cube	Count
11 lbs.	1.90	250 ea.



**P2.5R-MW (High Heat)**  
**Two Compartment Entrée Platter**  
 Size: 9-1/4" L x 5-3/4" W x 2-3/8" D  
 Colors: Black - Microwavable

Wt.	Cube	Count
13 lbs.	2.00	250 ea.



**P3.5R-MW (High Heat)**  
**Three Compartment Entrée Platter**  
 Size: 9-1/4" L x 5-3/4" W x 2-3/8" D  
 Colors: Black - Microwavable

Wt.	Cube	Count
12 lbs.	1.9	250 ea.

## HS39 Manual Heat Sealer

The HS39 is designed to heat seal to a tray, die cut, and rewind scrap film either with manual operation, or with an automatic sensor built into the machine that will automatically operate the seal head when the seal pocket is inserted into the machine (optional). Capable of output at up to 12 units per minute, the HS39 will prove to be an asset to your kitchen for years to come.



- Tray counter feature that will allow you to see how many units have been run through the machine, counter can be reset daily
- Die cut film trimming
- Compact design
- Programmable heat controller
- Can use large film rolls up to 3,000'
- Custom pockets available

## HS48 Manual Heat Seal Lidding Machine

This low cost machine offers a fast and effective solution for sealing heat sensitive film to a wide variety of containers, for a tamper-evident, stay-fresh seal. Included with the machine is one set of three seal plates, allowing pre-loading of the third plate while the other two plates are cycling through the machine.

### Versatile

- Large variety of seal plates available as well as custom sizes
- Seals containers up to 4" in depth
- Seals 16 trays per minute or more depending on tray size
- Swing-out arm for fast and safe change of film rolls
- Quick release film collars require no additional tools to remove



### Heavy Duty Construction

5" high, "C" channel rails with the top of the rail completely covered in stainless steel. Heater guards open on both sides for easy cleaning and are cool to the touch. Plug in heater wiring make roller replacement a snap.

### Optional HS48 Slitter and Rolling Cart (Inset)

The in-line film slitter will reduce your production time by 30% when sealing 3-across tray production (D74 and H1 seal plates). Easily attaches to the side rails and comes with quick disconnect latch clips. Uses standard hardware triangle blades.



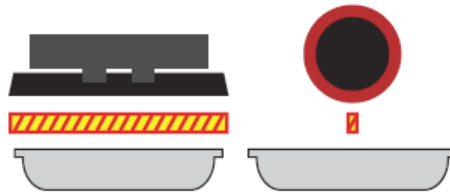
Ask about our no-obligation trial on the HS48 Manual Heat Seal Machine

# OMNI IDX140SE Automatic Heat Sealer

Our IDX140SE is designed to seal heat sensitive film to plastic or paper containers for a tamper evident, stay fresh seal. The machine utilizes a mechanical platen style seal head, interchangeable pockets and rotating cutter.

## Standard Features

- Platen Head vs Seal Roller
- Seal area comparison
- Stainless steel construction
- Intermittent motion pocket conveyor
- With adjustable dwell time seal head produces superior seals at high production speeds
- Wash down safe
- Variable speed
- Universal exit ramp
- Allen-Bradley PLC Controller
- T-Gasket seal pockets
- Air driven seal head for superior seal strength
- Able to seal trays with multiple cutoff lengths



**Platen Head vs Seal Roller  
Seal Area Comparison**

## Optional Features

- Custom lengths and widths available
- In-line film printer/coder
- Tray de-nesters
- Product fillers



This equipment includes option in-line printing system

# OMNI IDX280-DL Automatic Heat Sealer



Machine pictured with optional In-Line Printer, Auto Tray Denester and Touch Screen Control Panel

Dual lane design supports 2-across tray sealing on trays up to 5.25" wide at speeds of up to 60 trays per minute. This machine utilizes a platen style seal head, interchangeable sets of pockets and rotating cutters for superior sealing for no-leak tray seals.

## Standard Features

- Brushed finished stainless steel construction for low maintenance and easy cleaning
- Intermittent motion pocket conveyor with adjustable dwell time
- Universal adjustable dual-lane tray exit ramps
- "Platen" style seal head makes contact with entire sealing surface of the tray, works on molded paper or plastic trays, even trays with turned up seal flanges
- Variable speed control; .05 secs to 3.0 sec.
- One touch film holder assembly, holds 2 film rolls at once
- Allen-Bradley programmable controller
- Dual-lane T-gasket seal pockets for trays up to 5.25" wide
- Electrical control box meets N.E.M.A. 4X electrical standards for "wash down" safe
- No tools needed to change from one tray size to another



Standard Control Panel

## Optional Features

- Dual-lane automatic fruit filler at over 3,000 sealed trays per hour
- In-line film printer/coder, add a code date for local health compliance
- Auto tray de-nester
- Touch screen control panel
- Servo motor for smooth, precise operations, ideal for liquids or using registered print films
- Radius cutter for perimeter trimming on round, oval or rounded corner trays



Optional Touch Screen Control Panel

**Custom lengths and widths made to your specifications.  
Multi-lane platforms are available on all IDX units.**

## OMNI THF3000 Automatic Hot or Cold Filler

Omni “Twin Head Filler” systems are designed to work in conjunction with automatic heat seal packaging machines to automate the filling and heat sealing of items such as fruit cocktail, sliced peaches or pears, applesauce, oatmeal, grits, melted cheese and other flowing products. The OMNI THF is an ideal way to speed up production while minimizing your labor during food service production.

### Standard Features

- Brushed stainless steel construction, 1-1/2” x 1-1/2” tubular frame
- A tank “agitator” provides constant mixing within the holding hopper to ensure an even distribution of dispensed food products
- Waukesha valves allows you to dispenses both “hot & cold” food products without changing out the valves
- Variable speed control 25 to 30 cycles per min. per lane
- Standard filling range is 2 oz. to 12 oz. fill, optional cylinders will allow fill up to 36 oz.
- Select from manual fill to automatic fill via signal from OMNI IDX heat seal machine, automatically fills on stop
- Select single lane or dual lane tray filling
- Complete filler assembly is easily disassembled without tools for easy cleaning
- Wash down safe electrical control box
- Stainless steel locking caster wheels and quick disconnect locking pins allow easy separation of the THF Filler from the sealing machine for easy cleaning

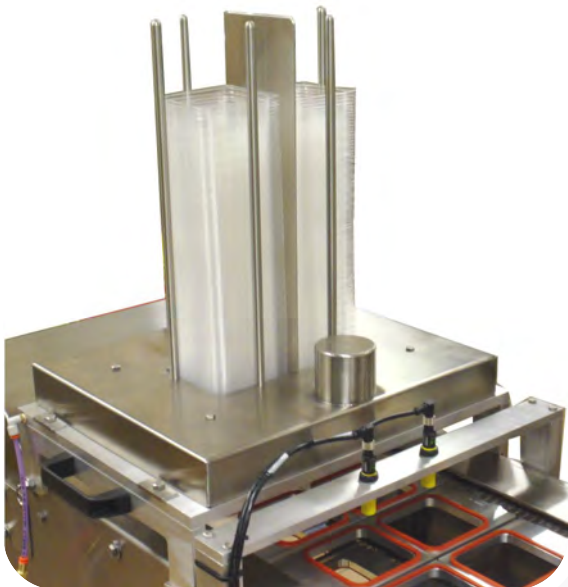


## OMNI Denester

Omni IDX Denester systems are designed to work in conjunction with OMNI IDX automatic heat seal packaging machines offering a safe ideal way to automatically drop a specifically sized tray into the seal pockets of the heat seal packaging machine to speed up production and reduce your labor force during food service production.

### Standard Features

- Stainless steel construction and aluminum frame construction for easy cleaning
- Stainless steel wafers that separate the trays
- Rack & pinion gears rotate the separator wafers to denest the stacked trays
- Stainless steel kickers added to wafers give an extra push to separate the trays so they easily drop into the seal pockets
- 2 air lines connect the denester to the air supply of the IDX Heat Seal Machine for operation
- Quick disconnects on the air lines make changing out the denester quick and easy



## OMNI FC1200 Production Conveyor

Omni Conveyor Systems are designed to work in conjunction with automatic heat seal packaging machines offering a safe, ideal method to station your labor force during food service production.

### Standard Features

- Stainless steel construction
- Available in 10, 12 & 16 foot lengths
- Variable conveyor speed control
- 12" wide flat food grade rubber belt
- Start/Stop button, plus up to 3 additional stop buttons
- Quick release belt tension control
- Wash down safe electrical control box
- Adjustable height frame
- Stainless steel locking caster wheels



## OMNI-RA36S Rotating Accumulator Table

Powered accumulator systems are designed to work in conjunction with automatic heat seal packaging machines offering additional space for finished sealed trays to come off the line. Available in 3' and 4' diameter turntables, Accumulator Tables assist your staff during the sorting and packing of sealed trays into the transit cabinets or tubs.

- Rugged, heavy duty construction
- Stainless steel construction
- Variable speed control
- 4" deep tub, rated to handle up to 300 lbs.
- Leg levelers that will adjust from 28" to 32" in height



## In-Line Transfer Printer

A superior thermal transfer coding solution for flexible packaging applications that demand high performance, ultrafast throughput, and coding flexibility.

- Advanced coder software virtually eliminates set-up errors
- Simple message selection reduces the potential for operator errors
- Range of customer selectable rules and permissions that help to prevent operator error with the printed code

### Printing Capabilities

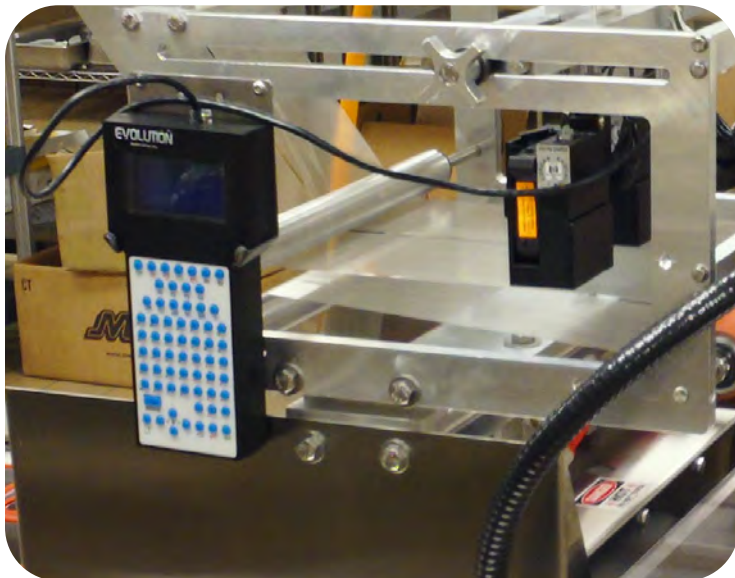
Full downloadable font support using TrueType® fonts (including multiple languages and Unicode support); fixed, variable and merged text fields; flexible date/time formats; flexible shift code formats; auto best before date calculations and concession management; calendar rules; auto incrementing decrementing text, counters and bar codes; multiple graphic formats supported (up to maximum print area); link fields to databases; scalable text and text blocks

### Bar Codes

EAN 8, EAN 13, UPC-A, UPC-E, Code 39, EAN 128, Code 128, ITF, RSS (including 2D composite codes); others available upon request

### Operator Interface

WYSIWYG print preview



## In-Line Date Coder

**Using Hewlett Packard technology this printer will print two lines of high resolution print characters.**

- Software comes with one font style in character print heights of 1/2" to 7/32"
- Create logos in any graphic program capable of producing 2-bit black and white logos
- Produce product date coding



**OmniSeal**  
PACKAGING MACHINES

 **Preferred  
Packaging**

A division of  **Flexible Packaging**

CONTACT US

[sales@prefpkg.com](mailto:sales@prefpkg.com)  
770.416.0088

5903 Peachtree Industrial  
Blvd. Norcross, GA 30092

[www.prefpkg.com](http://www.prefpkg.com)

 **AIB**  
INTERNATIONAL

**Preferred Packaging** is a manufacturer of multilayer flexible films, thermoformed containers and a supplier of tray sealing equipment for meal solution providers and school systems.